

# MULTI-CHEF™

The Ultimate Buffet System

*How to Build a Custom Buffet Station - 68*

*Warmers + Coolers - 70*

*Diamond Collection - 72*

*Induction Systems and Chafing Pods - 74*

*Surfaces + Accessories - 76*

*Mini-Chef - 77*





# MULTI-CHEF™ CUSTOM BUFFET STATIONS

Select your Multi-Chef™ base height and color, add serving boards, warming accessories or coolers to create a variety of buffet stations. Mix and match pieces to create a new look anytime. Use Rosseto® surfaces to connect bases together or with Skycap® and Swan® Risers. Can be used with all standard size food & water pans.

## 1 SELECT A STYLE TO MATCH YOUR DÉCOR



**Iris™ Multi-Chef™**  
Airy and sophisticated, each piece is stamped with a modern floral design. The lighter weight, brushed stainless steel structure is perfect for pop-up breakfast displays and mid-afternoon bites.

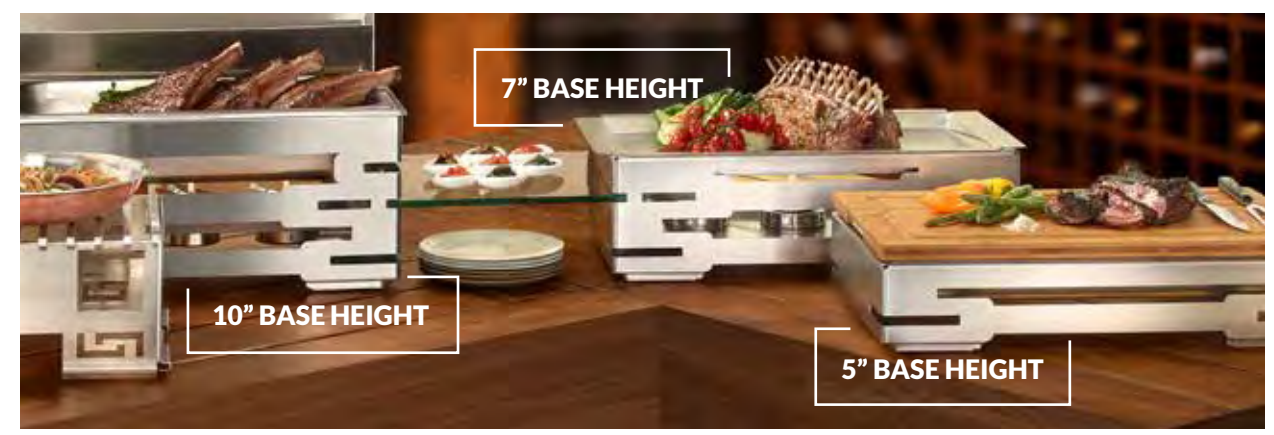


**Diamond Multi-Chef™**  
Get ready to shine with the new Diamond Collection for Multi-Chef. Clean lines and modern form come together to create luxurious pieces that will instantly give your buffet an elitist feel.

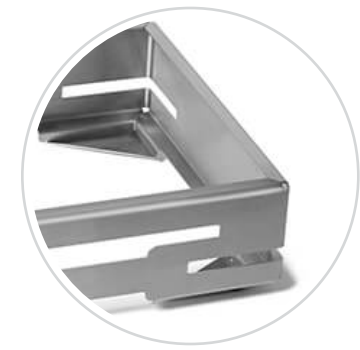


**Original Multi-Chef™**  
The original Multi-Chef™ pairs a beautiful modern aesthetic with a versatile design to add sophistication and utility to your buffet.

## 2 CHOOSE A BASE HEIGHT



## 3 PICK THE PERFECT FINISH



Stainless Steel



Black Matte Steel



White Matte Steel  
\*Original Multi-Chef™ Only

## 4 ADD SURFACES AND ACCESSORIES



Cooling



Warming



Carving

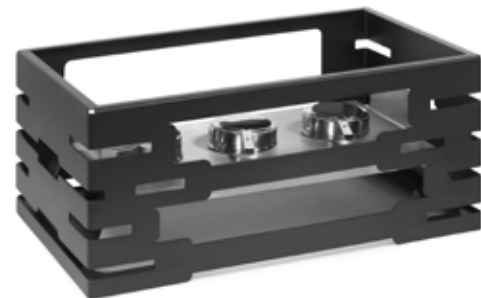


Lids

There are a full array of surfaces and accessories that work with Multi-Chef™ to add versatility to your buffet setup. Mix and match to add levels of functionality and convenience for your guests.



**10" Multi-Chef™ Stainless Steel Warmer**  
 3 Fuel Holders, Reversible Burner Stand  
 21.5 x 13.5 x 10 in  
 54.6 x 34.3 x 25.4 cm  
**Item # SM191**



**10" Multi-Chef™ Black Matte Warmer**  
 3 Fuel Holders, Reversible Burner Stand  
 21.5 x 13.5 x 10 in  
 54.6 x 34.3 x 25.4 cm  
**Item # SM195**



**7" Multi-Chef™ Black Matte Cooler**  
 21.6 x 13.57 x 7 in  
 54.9 x 34.5 x 17.8 cm  
**Item # SM244**



**7" Multi-Chef™ Stainless Steel Cooler**  
 21.6 x 13.57 x 7 in  
 54.9 x 34.5 x 17.8 cm  
**Item # SM243**



**7" Multi-Chef™ White Matte Cooler**  
 21.6 x 13.57 x 7 in  
 54.9 x 34.5 x 17.8 cm  
**Item # SM245**



**Multi-Chef™ Black Matte Warmer with Grill-Top**  
 21.6 x 13.6 x 10 in  
 59.1 x 34.3 x 26.7  
**Item # SK032**



**Multi-Chef™ Stainless Steel Warmer with Grill-Top**  
 21.6 x 13.6 x 10 in  
 59.1 x 34.3 x 26.7  
**Item # SK031**



**Acrylic Ice Tub for Multi-Chef™**  
 24.5 x 13.5 x 4.75 in  
 62.2 x 34.3 x 12.1 cm  
**Item # ICBR19C**



**5" Multi-Chef™ Black Matte Base**  
 21.6 x 13.57 x 5 in  
 54.9 x 34.5 x 17.8 cm  
**Item # SM235**



**5" Multi-Chef™ Stainless Steel Base**  
 21.6 x 13.57 x 5 in  
 54.9 x 34.5 x 17.8 cm  
**Item # SM230**



**7" Multi-Chef™ Black Matte Warmer**  
 3 Fuel Holders and Short Burner Stand  
 21.6 x 13.57 x 7 in  
 54.9 x 34.5 x 20.3 cm  
**Item # SM234**



**7" Multi-Chef™ Stainless Steel Warmer**  
 3 Fuel Holders and Short Burner Stand  
 21.6 x 13.57 x 7 in  
 54.9 x 34.5 x 20.3 cm  
**Item # SM229**



**7" Multi-Chef™ White Matte Warmer**  
 3 Fuel Holders and Short Burner Stand  
 21.6 x 13.57 x 7 in  
 54.9 x 34.5 x 20.3 cm  
**Item # SM236**



**5" Multi-Chef™ White Matte Base**  
 21.6 x 13.57 x 5 in  
 54.9 x 34.5 x 17.8 cm  
**Item # SM237**







**Diamond Multi-Chef™ Black Matte 7” Kit**

Includes Burner, Fuel Holder, and Grill

26 x 15.75 x 7.5 in

66 x 40 x 19 cm

**Item # SK047**



**Diamond Multi-Chef™ Black Matte 10” Kit**

Includes Burner, Fuel Holder, and Grill

28 x 16.6 x 10 in

71 x 42.2 x 25.4 cm

**Item # SK046**



**Diamond Multi-Chef™ Black Matte Frame 7”**

26 x 15.75 x 7.5 in

66 x 40 x 19 cm

**Item # SM274**



**Diamond Multi-Chef™ Black Matte Frame 10”**

28 x 16.6 x 10 in

71 x 42.2 x 25.4 cm

**Item # SM273**



**Diamond Multi-Chef™ Stainless Steel 7” Kit**

Includes Burner, Fuel Holder, and Grill

26 x 15.75 x 7.5 in

66 x 40 x 19 cm

**Item # SK045**



**Diamond Multi-Chef™ Stainless Steel 10” Kit**

Includes Burner, Fuel Holder, and Grill

28 x 16.6 x 10 in

71 x 42.2 x 25.4 cm

**Item # SK044**



**Diamond Multi-Chef™ Stainless Steel Frame 7”**

26 x 15.75 x 7.5 in

66 x 40 x 19 cm

**Item # SM267**

\*Induction unit (BP007) not included.



**Diamond Multi-Chef™ Stainless Steel Frame 10”**

28 x 16.6 x 10 in

71 x 42.2 x 25.4 cm

**Item # SM254**



**Soft Closing Chafing Pod**

Brushed Stainless Steel

22.8 x 17.3 x 7.1 in

58 x 44 x 18 cm

**Item # SM249**



**Iris™ Multi-Chef™ Stainless Steel 7” Kit**

Stamped Brushed Stainless Steel

Includes Burner, Fuel Holder, and Grill

21.5 x 13.5 x 7.25 in

54.6 x 34.3 x 18.4 cm

**Item # SK043**



# REVOLUTIONIZE YOUR BUFFET

This Stainless Steel Chafing Pod with soft closing lid, is the latest addition to our Multi-Chef™ system. Simply add our Induction set and your food pan and you are ready to serve, no fuel burners required. Sleek design will give your buffet an updated Modern look instantly. Customers will love the hassle free (and noise free) functionality of the soft closing lid for seamless serving. You will love the durability and versatility.

- ✔ High quality US Stainless Steel
- ✔ Soft closing lid
- ✔ Works with all standard food pans
- ✔ Works with Rosseto Induction set
- ✔ Fits all Rosseto Multi-Chef™ Bases
- ✔ Modern design
- ✔ Perfect for professional catering and buffet-service
- ✔ Clear glass lid for guests to view contents
- ✔ Self-draining system to remove condensation



## Soft Closing Chafing Pod

Brushed Stainless Steel  
22.8 x 17.3 x 7.1 in  
58 x 44 x 18 cm

Item # SM249



## Induction for Chafing Pod - 110V

Induction Heater 110V with stamped hole square w/ 4 magnets + Plate

Item # SMM012

## Induction for Chafing Pod - 220/240V

Induction Heater 220/240V with stamped hole square w/ 4 magnets + Plate

Item # SMM013

Soft Closing Chafing Pod pairs well with Multi-Chef™ base.



Once you experience warming with the Induction Set from Rosseto®, you will never use fuel burners again. Precise warming technology heats food better, faster.

Control temperatures throughout your event to maintain food quality. Patented magnetic system holds chafers in place. Eliminates the cost and toxicity of canned fuel.

Works with all standard chafers and can heat continuously for ups to 9 hours, non-stop.

## Multi-Chef™ 110V Single Induction

Bamboo Surface with 4 magnets  
21.6 x 13.6 x 1.6 in  
54.8 x 34.5 x 4.0 cm

Item # BP006

## Multi-Chef™ 220/240V Single Induction

Bamboo Surface with 4 magnets  
220/240V European Model Induction Unit (CE approved)  
Plug is Standard DIN EURO PLUG

Item #BP008



## Multi-Chef™ 110V Double Induction

Bamboo Surface with 8 magnets  
21.6 x 13.6 x 1.6 in  
54.8 x 34.5 x 4.0 cm

Item # BP007

## Multi-Chef™ 220/240V Double Induction

Bamboo Surface with 8 magnets  
220/240V European Model Induction Unit (CE approved)  
Plug is Standard DIN EURO PLUG

Item #BP009



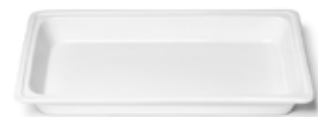


**Track Grill**

Stainless Steel Track Grill  
24 x 12 x 1 in  
61.0 x 30.5 x 1.9 cm

**Item # SM193****Griddle with Flatbread Warming Tray**

Griddle and Stainless Steel Tray with Holes  
23 x 13.25 x 1.5 in  
58.4 x 33.7 x 2.5 cm

**Item # SM217****Ceramic Food Pan**

White Ceramic Food Pan  
20.87 x 12.87 x 2.32 in  
53.0 x 32.7 x 5.9 cm

**Item # CP004**

\* Dishwasher, Microwave and Oven Safe  
\* DO NOT USE on direct heat or with sternos/fuel burners as it will damage the product.

**Chafing Lid**

Multi-Chef™ Stainless Steel  
22.5 x 14.5 x 5 in  
57.1 x 36.8 x 12.7 cm

**Item # SM239**

\* Use with water pan for snug fit

**Cutlery Board\***

Bamboo with Metal Inserts  
21.57 x 13.57 x 1.57 in  
54.8 x 34.5 x 4.0 cm

**Item # BP002****Slatted Bread Board\***

Multi-Chef™ Bread Board, Bamboo  
21.38 x 13.58 x 1.57 in  
54.3 x 34.5 x 4.0 cm

**Item # BP004****Carving Board\***

Multi-Chef™ Carving Board, Bamboo  
21.57 x 13.58 x 1.57 in  
54.8 x 34.5 x 4.0 cm

**Item # BP003****Flat Board\***

Multi-Chef™ Flat Board, Bamboo  
21.38 x 13.58 x 1.38 in  
54.3 x 34.5 x 3.5 cm

**Item # BP001****Chiller Tray**

Multi-Chef™ Chiller Tray  
Stainless Steel  
22 x 12 x 0.5 in  
55.9 x 25.4 x 1.3 cm

**Item # SM238****Ice Tub**

Acrylic Ice Tub for Multi-Chef™  
24.5 x 13.5 x 4.75 in  
62.2 x 34.3 x 12.1 cm

**Item # ICBR19C****Plexi Lid**

Multi-Chef™ Clear Plexi Lid  
22.5 x 14.5 x 8.8 in  
57.1 x 36.8 x 22.4 cm

**Item # SA127****Mini-Chef Stainless Steel Warmer**

13 x 15 x 6.85 in  
33.0 x 38.1 x 17.4 cm

\*fits standard 12 x 14 in (30.5 x 35.6) Butane Burner

\*Stove not included



 **Black Matte**  
**Item # SM247**

 **Stainless Steel**  
**Item # SM216**

**Mini-Chef Stainless Steel Warmer Kit**

Track Grill, Burner Stand  
1 Fuel Holder, Stackable Frame

13.2 x 13.5 x 7.2 in  
33.5 x 34.3 x 18.3 cm

\*Stove not included



 **Black Matte**  
**Item # SK041**

 **Stainless Steel**  
**Item # SK033**

**Spice Shelf**

Includes Stainless Steel Frame  
& 3 Porcelain Bowls  
14 x 4.5 x 2 in  
35.6 x 11.4 x 5.1 cm

**Item # SM215****Large Square Track Grill**

13.2 x 13.5 x 0.8 in  
33.5 x 34.3 x 2.0 cm

**Item # SM219**

\*fits on Mini-Chef Warmer



\*For best results use with food/water pan to collect crumbs and prevent sliding.