



**EZ-SERV® 200M**  
(2 Containers)  
1.1 Gal / 4.2 L ea.  
11 x 8 x 16 in  
27.9 x 20.3 x 40.6 cm  
**Item # EZS1081 (metal base)**  
**Item # EZS1104 (plastic base)**  
▽ ☺



**EZ-SERV® 100M**  
(2 Containers)  
1.1 Gal / 4.2 L ea.  
11 x 8 x 16 in  
27.9 x 20.3 x 40.6 cm  
**Item # EZS1074 (metal base)**  
**Item # EZS1098 (plastic base)**  
▽ ☺



**EZ-SERV® Three-Container**  
**Table Top**  
with Grey Metal Stand  
1.3 Gal / 4.9 L  
18 x 13.5 x 26.5 in  
45.7 x 34.3 x 67.3 cm  
**Item # EZ564**  
▽ ☺



**EZ-PRO™ H1B**  
1 Gal / 3.8 L  
6 x 8 x 17 in  
15.2 x 20.3 x 43.2 cm  
**Item # EZ50199**  
▽ ☺



**EZ-PRO™ H2B**  
1 Gal / 3.8 L ea.  
9 x 8 x 17 in  
22.9 x 20.3 x 43.2 cm  
**Item # EZ50299**  
▽ ☺



**EZ-PRO™ H3B**  
1 Gal / 3.8 L ea.  
14 x 8 x 17 in  
35.6 x 20.3 x 43.2 cm  
**Item # EZ50399**  
▽ ☺



**EZ-PRO™ 5**  
1 Gal / 3.8 L ea.  
26 x 8 x 21 in  
66 x 20.3 x 53.3 cm  
**Item # EZP2883**  
▽ ☺



**EZ-SERV® 6-Container**  
Carousel Table-Top  
1.3 Gal / 4.9 L  
20.9 x 20.9 x 27.5 in  
53.1 x 53.1 x 69.8 cm  
**Item # EZ563**  
▽ ☺



**EZ-PRO™ 3**  
1 Gal / 3.8 L ea.  
16 x 8 x 21 in  
40.6 x 20.3 x 53.3 cm  
**Item # EZP2135**  
▽ ☺



**EZ-PRO™ C4S**  
1 Gal / 3.8 L ea.  
13 x 14 x 19 in  
33 x 35.6 x 48.3 cm  
**Item # EZP2753**  
▽ ☺



**EZ-PRO™ H2G**  
1 Gal / 3.8 L ea.  
9.19 x 8.13 x 17.19 in  
23.3 x 20.6 x 43.7 cm  
**Item # EZ565**  
▽ ☺



**EZ-PRO™ H3G**  
1 Gal / 3.8 L ea.  
14 x 8 x 17 in  
35.6 x 20.3 x 43.2 cm  
**Item # EZ566**  
▽ ☺



**EZ-PRO™ 2**  
1 Gal / 3.8 L  
10 x 8 x 21 in  
25.4 x 20.3 x 53.3 cm  
**Item # EZP2746**  
▽ ☺



**EZ-PRO™ T3**  
1 Gal / 3.8 L ea.  
19 x 10 x 16 in  
48.2 x 25.4 x 40.6 cm  
**Item # EZ51377**  
**Item # EZPROT3-N**  
▽ ☺



**EZ-PRO™ C4L**  
1 Gal / 3.8 L ea.  
14 x 13 x 22 in  
35.6 x 33 x 55.9 cm  
**Item # EZP2760**  
▽ ☺



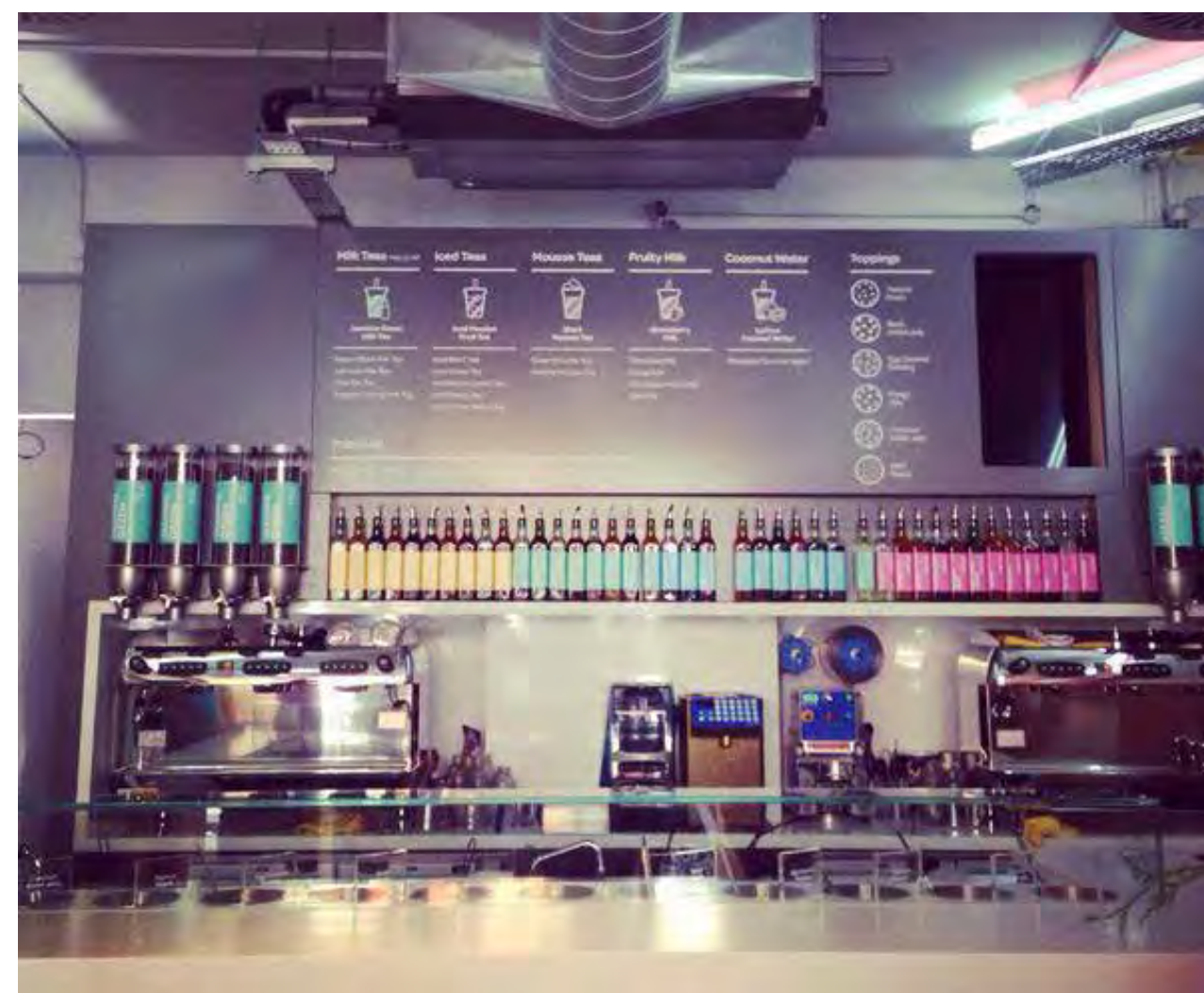
**EZ-PRO™ H1S**  
1 Gal / 3.8 L  
6 x 8 x 17 in  
38.1 x 25.4 x 53.3 cm  
**Item # EZ513**  
▽ ☺



**EZ-PRO™ H2S**  
1 Gal / 3.8 L ea.  
9 x 8 x 17 in  
22.9 x 20.3 x 43.2 cm  
**Item # EZ514**  
▽ ☺



**EZ-PRO™ H3S**  
1 Gal / 3.8 L ea.  
14 x 8 x 17 in  
35.6 x 20.3 x 43.2 cm  
**Item # EZ515**  
▽ ☺



## COFFEE & TEAS

Keep your tea leaves and coffee beans fresh without sacrificing style. The same technology that delivers exact portions also locks in freshness so you can be confident that you are serving your best product.



CUSTOMIZE FOR A LOOK THAT IS AS UNIQUE AS YOUR BUSINESS

# DISPENSING QUALITY.

Like all Rosseto® products, our dispensers are made using the highest standards in materials and manufacturing.

All dispensers are food grade quality. Handles are made from solid die casting, which guarantees they will never break and keep turning EZ SERV® after EZ SERV®. Shelving is composed of 3mm of the most durable materials available. All metal is made in the US and is customized in our own factory. This ensures every product passes through our strict quality controls so that customers receive our best products.

Our retail and Bulkshop® solutions have been used in cafeterias serving over 30,000 guests daily and are capable of maintaining structural integrity under the most rigorous use.

Rosseto's retail and Bulkshop® products have been helping industry leaders both large and small find the best merchandising solutions for their businesses for over 10 years. It has always been our goal to provide products that are easy to assemble, easy to maintain, and provide modern design elements that will compliment any store theme.

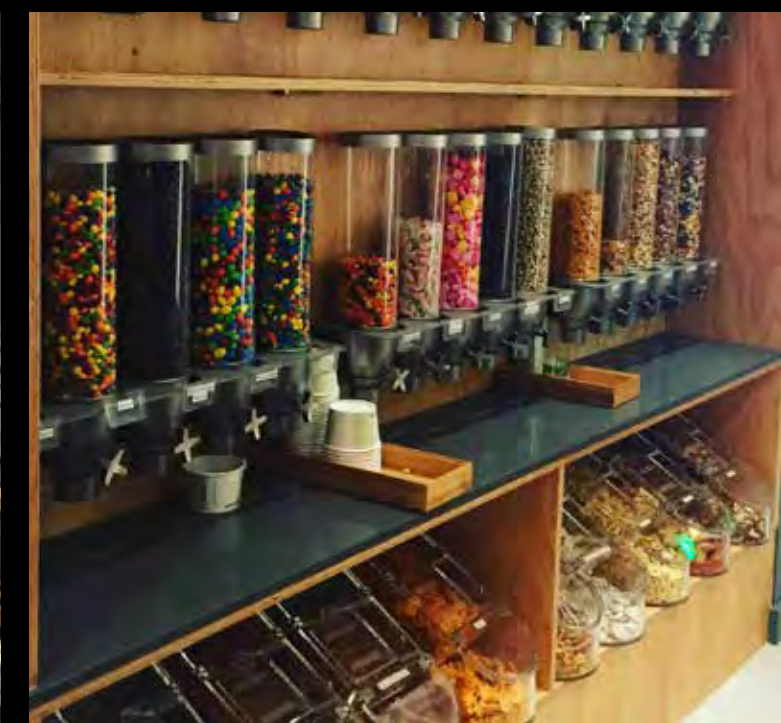
Patented, portion-control dispensers help control food cost and eliminates product waste. We are proud to say that our dispensers have set the standard in the industry for both quality and design.



NSF certification is your key to making sure that the products you use meet strict standards for public health protection.



“Presentation is everything. With the Rosseto® topping dispenser it’s beautiful, it’s clean cut, it’s very clear as to what toppings you’re trying to get. It fits well.”  
*-Walgreens*



# WALL-MOUNTED



**EZ-PRO™ 1W**  
1 Gal / 3.8 L  
7 x 7.75 x 15 in  
17.8 x 12.7 x 45.7 cm  
▽ ☉  
**Item # EZ501**  
**Item # EZ501-N**



**EZ-PRO™ 3W**  
1 Gal / 3.8 L ea.  
15.5 x 7.75 x 15 in  
39.4 x 19.7 x 38.1 cm  
▽ ☉  
**Item # EZP2906**  
**Item # EZP2906-N**



**EZ-SERV® 1W**  
1.3 Gal / 4.94 L  
6 x 6.5 x 21 in  
15.2 x 16.5 x 53.3 cm  
**Item # EZ523**  
▽ ☉



**EZ-SERV® 2W**  
1.3 Gal / 4.94 L ea.  
12 x 6.5 x 21 in  
30.5 x 16.5 x 53.3 cm  
**Item # EZ524**  
▽ ☉



**EZ-SERV® 3W**  
1.3 Gal. / 4.94 L ea.  
17.8 x 6.5 x 21 in  
45.2 x 16.5 x 53.3 cm  
**Item # EZ525**  
▽ ☉

All Containers Include  
**6 PORTION CONTROL WHEELS**  
ranging from 1 teaspoon to 4.5 teaspoons. Exact measuring saves on food cost!



**EZ-PRO™ 5W**  
1 Gal / 3.8 L ea.  
26 x 7.75 x 15 in  
66 x 19.7 x 38.1 cm  
▽ ☉  
**Item # EZP2890**  
**Item # EZP2890-N**



**EZ-SERV® 5W**  
1.3 Ga / 4.94 L ea.  
29 x 6.5 x 21 in  
73.7 x 16.5 x 53.3 cm  
**Item # EZ527**  
▽ ☉



**EZ-SERV® 3SW**  
0.65 Gal / 2.47 L ea.  
17.8 x 7 x 15.25 in  
45.2 x 17.8 x 38.7 cm  
**Item # EZ533**  
▽ ☉



**EZ-SERV® 5SW**  
0.65 Gal / 2.47 L ea.  
29 x 7 x 15.25 in  
73.7 x 17.8 x 38.7 cm  
**Item # EZ534**  
▽ ☉



**Wall Mount EZ-SERV® Dispenser**  
Single, 2 Gal / 7.6 L  
8.5 x 9 x 24 in  
21.6 x 22.9 x 61 cm  
**Item # EZ538**  
▽ ☉



**Wall Mount XL EZ-SERV® Dispenser**  
Single, 3.5 Gal / 13.3 L  
8.5 x 21 x 28 in  
21.6 x 22.9 x 61 cm  
**Item # EZ540**  
▽ ☉

**3W Catch Tray**  
Stainless Steel  
17.8 x 8 x 1.5 in  
45.2 x 20.3 x 3.8 cm  
**Item # EZT017**  
▽ ☉



**5W Catch Tray**  
Stainless Steel  
29 x 8 x 1.5 in  
73.7 x 20.3 x 3.8 cm  
**Item # EZT016**  
▽ ☉



NSF Certified options available.  
Please call for more information.

All wall mounted EZ-SERV® and EZ-PRO™ dispensers receive 6 different sized portion wheels in each container.

All wall mounted EZ-SERV® and EZ-PRO™ dispensers receive 6 different sized portion wheels in each container.

NSF Certified options available.  
Please call for more information.